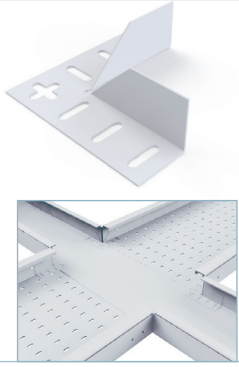




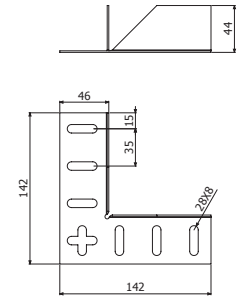
PDBPE



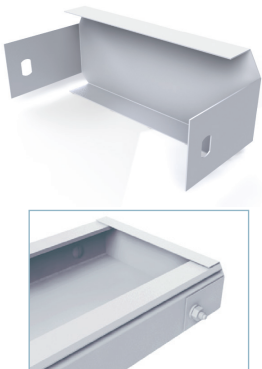
	GSP 7035	
	REF.	kg/ud
PDBPE 60/100	2/10135	0,24

4/100 x B2-P (2/10017)

↑60 ↑100

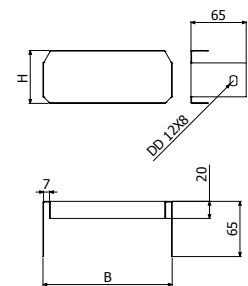


TFBPE



	H		B		GSP 7035	
	mm	inch	mm	inch	REF.	kg/ud
TFBPE 60X100	60	2 3/8"	100	4"	2/10136	0,09
TFBPE 60X150	60	2 3/8"	150	6"	2/10137	0,13
TFBPE 60X200	60	2 3/8"	200	8"	2/10138	0,15
TFBPE 60X300	60	2 3/8"	300	12"	2/10139	0,21
TFBPE 100X200	100	4"	200	8"	2/10140	0,24
TFBPE 100X300	100	4"	300	12"	2/10141	0,31
TFBPE 100X400	100	4"	400	16"	2/10142	0,40
TFBPE 100X600	100	4"	600	24"	2/10143	0,55

2/100 x CTBP (2/10017)



PSBPE

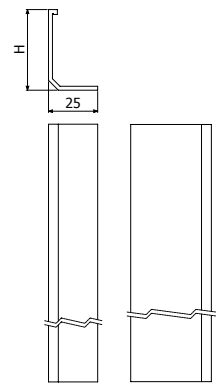


	H		PVC M1 UV	
	mm	inch	REF.	kg/m
PSBPE 60	41	1 5/8"	2/10144	0,09
PSBPE 100	74	2 7/8"	2/10145	0,13

4/100 x CTBP (2/10017)



L = 3 m (10 ft)

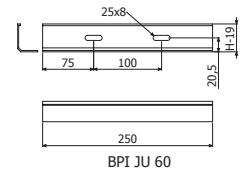


JUBPE

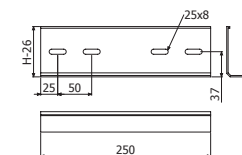


	H		PVC M1 UV	
	mm	inch	REF.	kg/ud
JUBPE 60	60	2 3/8"	2/10084	0,05
JUBPE 100	100	4"	2/10085	0,09

JUBPE 60 2/100 x CTBP (2/10017)
JUBPE 100 4/100 x CTBP (2/10017)



BPI JU 60



BPI JU 100